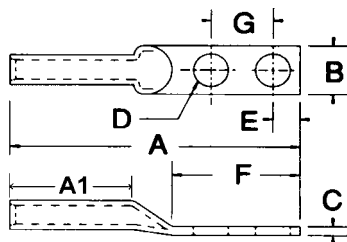


# Aluminum Long Barrel 2 Hole Compression Lugs



**Compression  
Power Connectors**

B2

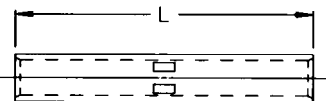


- ▶ AL9CU Listed - for both Aluminum and Copper Conductors
- ▶ Pre-filled with Oxide Inhibitor
- ▶ Made of High-Conductivity Seamless Aluminum
- ▶ Electro-Tin Plating Resists Corrosion, reduces contact resistance for Maximum Conductivity
- ▶ Dual Mounting Holes for Superior Contact Integrity
- ▶ Color Coded Die Index and Crimp Marks Printed on Barrel
- ▶ UL 486B AL9CU Listed for Applications Thru 35KV

Dimensions = Inches

Cat. No.	Wire Range	Stud Size	Color Code	ID	OD	A	A1	B	C	D	E	F	G	Box Qty
93110	1/0 Str.	3/8	Tan	.39	.63	3.50	1.2	.85	.24	.41	.38	1.87	1.00	10
93111	1/0 Str.	1/2	Tan	.39	.63	4.75	1.2	.85	.24	.51	.63	3.12	1.75	20
93112	2/0 Str.	1/2	Olive	.44	.69	4.80	1.3	.94	.24	.51	.63	3.12	1.75	20
93114	3/0 Str.	1/2	Ruby	.48	.76	5.00	1.4	1.03	.28	.51	.63	3.12	1.75	20
93116	4/0 Str.	1/2	White	.55	.84	5.25	1.4	1.15	.29	.51	.63	3.12	1.75	12
93118	250 MCM	1/2	Red	.59	.92	5.31	1.5	1.26	.32	.51	.63	3.12	1.75	12
93120	300 MCM	1/2	Blue	.65	1.01	5.50	1.6	1.37	.35	.51	.63	3.12	1.75	9
93122	350 MCM	1/2	Brown	.72	1.12	5.87	1.9	1.52	.39	.51	.63	3.12	1.75	6
93124	400 MCM	1/2	Green	.76	1.19	6.43	2.3	1.61	.42	.51	.63	3.12	1.75	6
93126	500 MCM	1/2	Pink	.84	1.32	6.50	2.5	1.79	.47	.51	.63	3.12	1.75	6
93128	600 MCM	1/2	Black	.92	1.44	6.75	2.6	1.96	.51	.51	.63	3.12	1.75	4
93130	750 MCM	1/2	Yellow	1.03	1.60	7.37	3.2	2.19	.55	.51	.63	3.12	1.75	4

# Aluminum Long Barrel Compression Splices



- ▶ AL9CU Listed - for both Aluminum and Copper Conductors
- ▶ Pre-filled with Oxide Inhibitor
- ▶ Made of High-Conductivity Seamless Aluminum
- ▶ Uniform Bright Electro-Tin Plating resists corrosion, reduces Contact Resistance for Maximum Conductivity
- ▶ Color Coded Die Index and Crimp Marks Printed on Barrel
- ▶ UL 486B AL9CU Listed for Applications Thru 35KV

Dimensions = Inches

Cat. No.	Wire Range	Color Code	ID	OD	Length (L)	Box Qty
93208	8 Str.	Blue	.16	.30	1.38	50
93210	6 Str.	Gray	.20	.34	1.63	50
93212	4 Str.	Green	.25	.44	2.00	30
93214	2 Str.	Pink	.31	.53	2.38	30
93216	1 Str.	Gold	.35	.53	2.38	15
93218	1/0 Str.	Tan	.39	.63	2.50	20
93220	2/0 Str.	Olive	.44	.69	2.63	20
93222	3/0 Str.	Ruby	.48	.76	2.88	15
93224	4/0 Str.	White	.55	.84	3.13	10
93226	250 MCM	Red	.59	.92	3.25	9
93228	300 MCM	Blue	.65	1.01	3.25	9
93230	350 MCM	Brown	.72	1.12	3.88	6
93232	400 MCM	Green	.76	1.19	4.88	6
93234	500 MCM	Pink	.84	1.32	5.00	6
93236	600 MCM	Black	.92	1.44	5.13	4
93238	750 MCM	Yellow	1.03	1.60	5.38	4