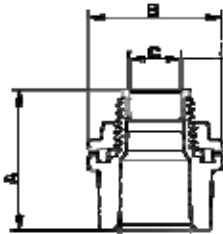


Rigid Water Tight Hubs - Zinc Die Cast



- ▶ To secure threaded rigid service entrance conduit & IMC to box or enclosure
- ▶ Assembled with 105°C rated flame retardant Lexan throat insulator and BUNA-N sealing ring that completely encircles knockout to prevent contaminants from entering enclosure
- ▶ UL Listed and CSA Certified for use in wet locations



Dimensions = Inches

Cat. No.	Trade Size	Dimensions			Inner Box	Outer Box
		A	B	C		
14800	1/2"	1.49	1.43	.57	-	150
14801	3/4"	1.52	1.69	.73	-	120
14802	1"	1.80	1.99	.93	-	50
14803	1-1/4"	1.92	2.36	1.29	-	40
14804	1-1/2"	1.89	2.76	1.50	-	30
14805	2"	1.89	3.23	1.97	-	30
14806	2-1/2"	2.53	3.54	2.41	-	10
14807	3"	2.53	4.33	2.97	-	6
14808	3-1/2"	2.53	4.72	3.46	-	6
14809	4"	2.53	5.43	3.96	-	6

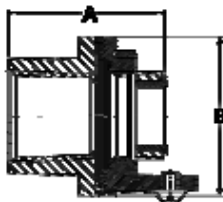
Rigid Fittings

M18

Rigid Water Tight Hubs with Bonding Screw - Zinc



- ▶ Male thread type
- ▶ Tapered female thread for Rigid conduit and IMC
- ▶ Recessed O-ring seal assures watertight connections
- ▶ Insulated throat and bonding locknut is suitable for service entrance application
- ▶ Assembled with 105°C rated flame retardant Lexan throat insulator and BUNA-N sealing ring
- ▶ UL Listed and CSA Certified for use in wet locations



Dimensions = Inches

Cat. No.	Trade Size	Dimensions		Inner Box	Outer Box
		A	B		
14810	1/2"	1.42	1.22	25	250
14811	3/4"	1.61	1.50	25	150
14812	1"	1.87	1.89	25	100
14813	1-1/4"	2.01	2.24	10	60
14814	1-1/2"	2.12	2.52	10	60
14815	2"	2.20	3.03	10	40
14816	2-1/2"	2.64	3.54	-	12
14817	3"	2.64	4.07	-	12
14818	3-1/2"	2.70	4.78	-	6
14819	4"	2.70	5.35	-	6