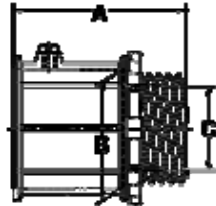


EMT Set Screw Connectors - Zinc Die Cast

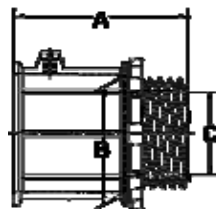


- ▶ Use to connect EMT Conduit to Steel Outlet Box, Load Center, or other Metal Enclosures
- ▶ Concrete Tight (When Taped)
- ▶ Die-Cast Zinc, Male hub threads NPS
- ▶ Pre-Set/Pre-Staked Combo Head Set-Screws
- ▶ UL Listed for EMT Conduit
- ▶ 2-1/2" - 4" are also UL Listed for use with Rigid & IMC
- ▶ 2-1/2" - 4" Uses 2 Set Screws

Dimensions = Inches

Cat. No.	Trade Size	Dimensions			Inner Box	Outer Box
		A	B	C		
14850	1/2"	1.06	.72	.59	50	500
14851	3/4"	1.25	.94	.78	25	250
14852	1"	1.46	1.18	1.00	25	200
14853	1-1/4"	1.93	1.53	1.32	10	100
14854	1-1/2"	2.09	1.76	1.53	10	60
14855	2"	2.36	2.22	1.99	5	40
14856	2-1/2"	2.95	2.92	2.35	-	12
14857	3"	3.15	3.55	2.95	-	12
14858	3-1/2"	3.52	4.05	3.43	-	6
14859	4"	3.62	4.55	3.91	-	6

EMT Set Screw Connectors - Insulated Throat - Zinc Die Cast



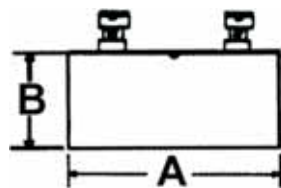
- ▶ Use to connect EMT Conduit to Steel Outlet Box, Load Center, or other Metal Enclosures
- ▶ Insulated Throat
- ▶ Concrete Tight (When Taped)
- ▶ Die-Cast Zinc, Male hub threads NPS
- ▶ Pre-Set/Pre-Staked Combo Head Set-Screws
- ▶ UL Listed for EMT Conduit
- ▶ 2-1/2" - 4" are also UL Listed for use with Rigid & IMC
- ▶ 2-1/2" - 4" Uses 2 Set Screws



Dimensions = Inches

Cat. No.	Trade Size	Dimensions			Inner Box	Outer Box
		A	B	C		
14860	1/2"	1.14	.72	.59	50	500
14861	3/4"	1.33	.94	.78	25	250
14862	1"	1.54	1.18	1.00	25	200
14863	1-1/4"	1.99	1.53	1.32	10	100
14864	1-1/2"	2.13	1.76	1.53	10	60
14865	2"	2.44	2.22	1.99	5	40
14866	2-1/2"	3.03	2.92	2.34	-	12
14867	3"	3.22	3.55	2.88	-	12
14868	3-1/2"	3.58	4.05	3.31	-	6
14869	4"	3.72	4.55	3.86	-	6

EMT Set Screw Couplings - Zinc Die Cast



- ▶ Use to connect EMT Conduit to EMT Conduit
- ▶ Concrete Tight (When Taped)
- ▶ Die-Cast Zinc
- ▶ Pre-set/Pre-staked Combo Head Set-screws
- ▶ UL Listed for EMT Conduit
- ▶ 2-1/2" - 4" are also UL Listed for use with Rigid & IMC
- ▶ 2-1/2" - 4" Uses 4 Set Screws

Dimensions = Inches

Cat. No.	Trade Size	Dimensions		Inner Box	Outer Box
		A	B		
14870	1/2"	1.38	0.72	50	500
14871	3/4"	1.46	.94	25	250
14872	1"	1.98	1.18	20	200
14873	1-1/4"	2.52	1.53	10	100
14874	1-1/2"	2.95	1.76	10	60
14875	2"	3.43	2.22	5	20
14876	2-1/2"	3.94	2.92	-	12
14877	3"	4.33	3.55	-	12
14878	3-1/2"	4.88	4.05	-	6
14879	4"	5.14	4.55	-	6