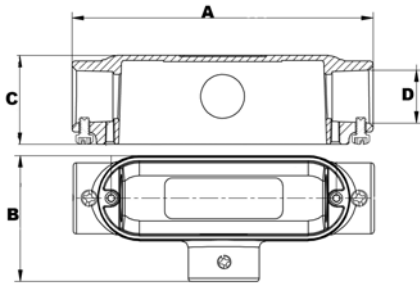


Aluminum EMT Set Screw Conduit Bodies T Type



To Provide Access to Conductors for Pulling, Splicing, and Maintenance. For EMT Conduit

- ▶ Set Screw for EMT Conduit
- ▶ RainTight when used with Gasketed Covers
- ▶ Die-Cast from High-Strength, Corrosion and Weather Resistant Copper Free Aluminum Alloy
- ▶ Flat Back Design for easy mounting close to walls



Dimensions = Inches

Cat. No	Trade Size	Dimensions-T Series				Box Qty
		A	B	C	D	
14160	1/2"	4.75	2.03	1.36	.72	50
14161	3/4"	5.51	2.30	1.63	.96	50
14162	1"	6.46	2.68	1.89	1.18	25
14163	1-1/4"	8.35	3.52	2.50	1.53	10
14164	1-1/2"	8.36	3.52	2.50	1.76	10
14165	2"	10.55	4.27	3.41	2.21	10

With Cover and Gasket

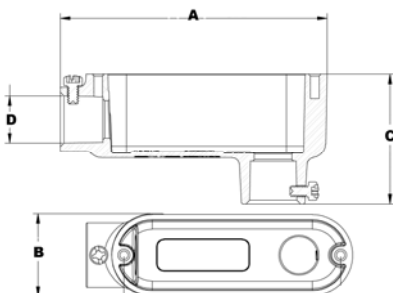
14170	1/2"	4.75	2.03	1.36	.72	50
14171	3/4"	5.51	2.30	1.63	.96	50
14172	1"	6.46	2.68	1.89	1.18	25
14173	1-1/4"	8.35	3.52	2.50	1.53	10
14174	1-1/2"	8.36	3.52	2.50	1.76	10
14175	2"	10.55	4.27	3.41	2.21	10

Aluminum EMT Set Screw Conduit Bodies LB Type



To Provide Access to Conductors for Pulling, Splicing, and Maintenance. For EMT Conduit

- ▶ Set Screw for EMT Conduit
- ▶ RainTight when used with Gasketed Covers
- ▶ Die-Cast from High-Strength, Corrosion and Weather Resistant Copper Free Aluminum Alloy
- ▶ Flat Back Design for easy mounting close to walls



Dimensions = Inches

Cat. No	Trade Size	Dimensions-LB Series				Box Qty
		A	B	C	D	
14140	1/2"	4.31	1.34	2.09	.72	50
14141	3/4"	5.08	1.56	2.39	.96	50
14142	1"	5.92	1.82	2.78	1.18	25
14143	1-1/4"	7.82	2.51	3.52	1.53	10
14144	1-1/2"	7.82	2.51	3.52	1.76	10
14145	2"	10.05	3.19	4.51	2.21	10

With Cover and Gasket

14150	1/2"	4.31	1.34	2.09	.72	50
14151	3/4"	5.08	1.56	2.39	.96	50
14152	1"	5.92	1.82	2.78	1.18	25
14153	1-1/4"	7.82	2.51	3.52	1.53	10
14154	1-1/2"	7.82	2.51	3.52	1.76	10
14155	2"	10.05	3.19	4.51	2.21	10