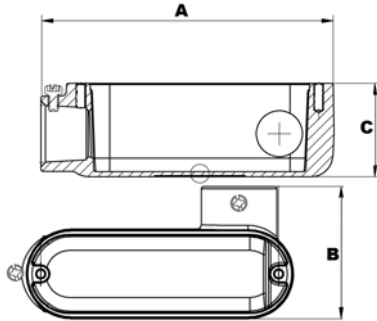


Aluminum Combination Conduit Bodies LR Type



To Provide Access to Conductors for Pulling, Splicing, and Maintenance. For Rigid, IMC & EMT Conduit

- ▶ Threaded for Rigid & IMC Conduits
- ▶ Set Screw for EMT Conduit
- ▶ RainTight when used with Gasketed Covers
- ▶ Die-Cast from High-Strength, Corrosion and Weather Resistant Copper Free Aluminum Alloy
- ▶ Flat Back Design for easy mounting close to walls



Dimensions = Inches

Cat. No	Trade Size	Dimensions-LR Series			Box Qty
		A	B	C	
14264	1/2"	4.31	2.03	1.36	50
14265	3/4"	5.08	2.30	1.63	50
14266	1"	5.92	2.68	1.89	25
14267	1-1/4"	7.82	3.52	2.50	10
14268	1-1/2"	7.82	3.52	2.50	10
14269	2"	10.05	4.27	3.41	10

With Cover and Gasket

14270	1/2"	4.31	2.03	1.36	50
14271	3/4"	5.08	2.30	1.63	50
14272	1"	5.92	2.68	1.89	25
14273	1-1/4"	7.82	3.52	2.50	10
14274	1-1/2"	7.82	3.52	2.50	10
14275	2"	10.05	4.27	3.41	10

Aluminum Combination Conduit Bodies LL Type



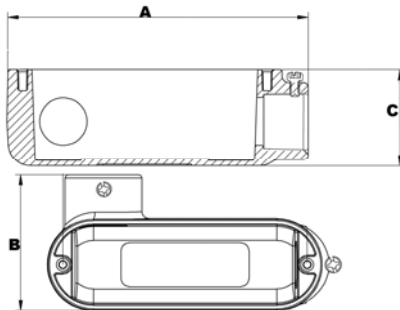
Conduit Bodies
Fittings

M8



To Provide Access to Conductors for Pulling, Splicing, and Maintenance. For Rigid, IMC & EMT Conduit

- ▶ Threaded for Rigid & IMC Conduits
- ▶ Set Screw for EMT Conduit
- ▶ RainTight when used with Gasketed Covers
- ▶ Die-Cast from High-Strength, Corrosion and Weather Resistant Copper Free Aluminum Alloy
- ▶ Flat Back Design for easy mounting close to walls



Dimensions = Inches

Cat. No	Trade Size	Dimensions-LL Series			Box Qty
		A	B	C	
14276	1/2"	4.31	2.03	1.36	50
14277	3/4"	5.08	2.30	1.63	50
14278	1"	5.92	2.68	1.89	25
14279	1-1/4"	7.82	3.52	2.50	10
14280	1-1/2"	7.82	3.52	2.50	10
14281	2"	10.05	4.27	3.41	10

With Cover and Gasket

14282	1/2"	4.31	2.03	1.36	50
14283	3/4"	5.08	2.30	1.63	50
14284	1"	5.92	2.68	1.89	25
14285	1-1/4"	7.82	3.52	2.50	10
14286	1-1/2"	7.82	3.52	2.50	10
14287	2"	10.05	4.27	3.41	10