

Ethernet 10/100 Base T Switch



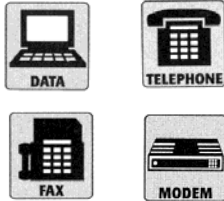
- ▶ Conveniently networks PC's to create an integrated home network
- ▶ Gold plated RJ-45 terminals provide clean and solid connections
- ▶ RJ-45 ports - slide switch uplink auto negotiation all ports
- ▶ 12VDC 500mA power supply included

Cat. No.	Ports	Length	Width	Height	Case Qty
87164	5	3-3/8"	5"	1"	20
87170	8	3-3/4"	5-3/4"	1"	10

8 Port Cat 5E Voice/Data Module



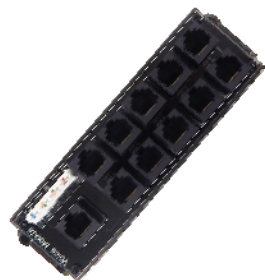
Basic Home Networking Expansion Module



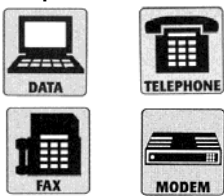
- ▶ Patch phone or data connections to 8 locations
- ▶ Combine with a TLDM, key system, or network hubs for additional applications
- ▶ Printed circuit board module
- ▶ 4-pair 110-type IDC Punchdowns and 8 CAT 5e RJ-45 ports
- ▶ 6-1/2"(W) x 1-7/8"(H) x 1-1/2"(D)

Cat. No.	Ports	Case Qty
87114	8	40

Voice/Data Expansion Module



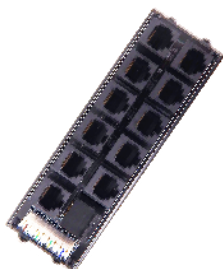
Basic Home Networking Expansion Module



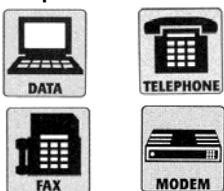
- ▶ Bridge up to 4 telephone lines to 11 locations
- ▶ Printed circuit board module
- ▶ One incoming 4-pair 110-type IDC punchdown and 11 outgoing RJ-45 jack connections
- ▶ Combine with a Category 5e board to route phone to remote locations
- ▶ 6-1/2"(W) x 1-7/8"(H) x 1-1/2"(D)

Cat. No.	Ports	Case Qty
87124	11	40

Voice/Data/Security Expansion Module



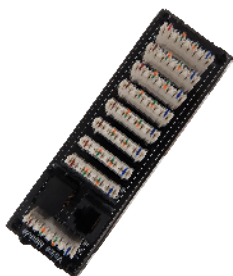
Basic Home Networking Expansion Module



- ▶ Bridge up to 4 telephone lines to 11 locations
- ▶ Printed circuit board module
- ▶ One incoming 4-pair 110-type IDC punchdown and 11 outgoing RJ-45 connections
- ▶ Combine with a Category 5e board to route phone to remote locations
- ▶ 6-1/2"(W) x 1-7/8"(H) x 1-1/2"(D)

Cat. No.	Ports	Case Qty
87120	11	20

8 Port Phone/Security Expansion Module



Basic telephone distribution



- ▶ Bridge up to 4 telephone lines to 8 locations
- ▶ Connect up to 8 separate telephones per line
- ▶ Connect to security system
- ▶ Printed circuit board module, 4-pair 110 type IDC punchdown
- ▶ 6-1/2"(W) x 1-7/8"(H) x 1-1/2"(D)

Cat. No.	Ports	Case Qty
87116	8	20

8 Port Phone Expansion Module



- ▶ Adds 8 more telephone extensions to an existing telephone hub
- ▶ Use a RJ45 patch cord to jump
- ▶ 6-1/2"(W) x 2-7/8"(H) X 1"(D)

Cat. No.	Ports	Case Qty
87168	8	20