



**Catalog Number** 01134  
**UPC Number** 60198601134  
**Description** Vinyl Insulated Fork Spade Terminal 16-14



#### Features

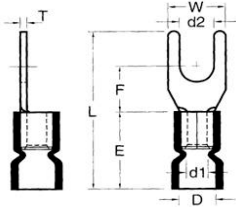
- Color Coded insulation for easy identification
- Manufactured from high strength copper alloy
- Electro-tin plated for corrosion resistance
- Easy entry expanded insulation eliminates strand “Hang Up”, increases the crimping rates and the reliability of the termination
- Wire range stamped on the surface for easy interpretation
- Butted seams prevent splitting under maximum pressure
- Serrated barrel & flared position of sleeves provide excellent contact & mechanical stress relief at insulation & barrel junction
- Packed in Zip Lock plastic bags with punched hole for pegboard hanging

#### General

**Insulation Type** Vinyl  
**Material** Copper Tubular/Copper Plate  
**Finish** Electro-Tin Plated  
**Color** Blue  
**Wire Range** 16-14  
**Stud Size** #8

#### Dimension Information

**Stock Thickness** 0.031  
**L Inches (mm)** 0.886  
**D Inches (mm)** 0.177  
**D1 Inches (mm)** 0.091  
**D2 Inches (mm)** 0.169  
**E Inches (mm)** 0.453  
**F Inches (mm)** 0.256  
**W Inches (mm)** 0.311  
**T Inches (mm)** 0.031



#### Specifications

**Temperature Rating** 167°F (75°C)  
**Voltage Rating** 600 V @105°C  
**Flammability Rating** UL94V-O  
**Amp Rating** 30 Amps

#### Packaging

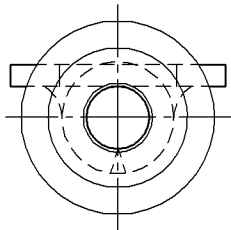
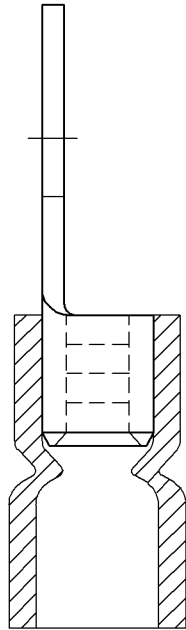
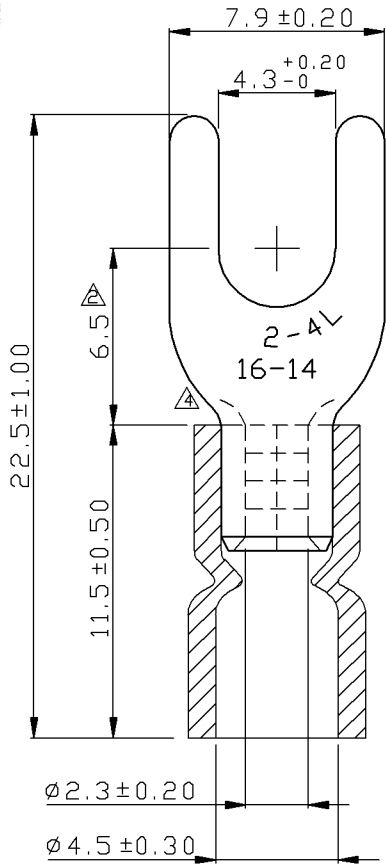
**Bag Qty** 25  
**Master Bag Qty** 100

#### Certifications

**UL** Yes  
**cUL** Yes  
**RoHS** Yes

Morris Products 53 Carey Road, Queensbury, NY 12804

[www.morrisproducts.com](http://www.morrisproducts.com)



| REV | DESCRIPTION | DATE       |
|-----|-------------|------------|
| △   | RDK-97127   | 2009/07/22 |
| △   | RDK-98020   | 2009/07/22 |
| △   | RDC-99213   | 2010/06/04 |

NOTE :

1. MAXIMUM ELECTRIC CURRENT : 

|        |    |    |
|--------|----|----|
| A.W.G. | 16 | 14 |
| AMP.   | 18 | 30 |
2. MAXIMUM ELECTRICAL RATING : 105°C 600 VOLTS MAX.
3. INSULATION MATERIAL : VINYL
4. INSULATION COLOR : BLUE
5. TERMINAL MATERIAL : COPPER
6. WIRE RANGE : 16-14 A.W.G. ( 1.5-2.5 mm<sup>2</sup> )
7. TERMINAL SURFACE TREATMENT : TIN PLATED
8. TERMINAL THICKNESS : 0.80 mm

|  |                 |
|--|-----------------|
| △ Tolerance Unless Otherwise Specified |                 |
| 0 >                                    | mm ± ANGLE      |
| >                                      | mm ± 0° ° REF ± |
| >                                      | mm ± ° ° ±      |
| >                                      | mm ± ° ° ±      |

|          |  |          |       |         |         |  |
|----------|--|----------|-------|---------|---------|--|
| NAME     | VINYL-INSULATED (EASY ENTRY) SPADE TERMINALS |          |       | UNIT    | mm      |  |
| PART NO. | 01134  | MATERIAL | ----- | APPROVE |         |  |
| NUMBER   |  | SCALE    | SHEET | PAGE    | CHECKED |  |
| DATE     | 2006/06/22                                   | 4/1      | 1-4   | 10F2    | DRAWN   |  |

Morris Products Inc.