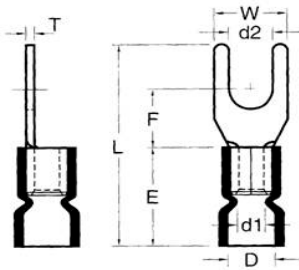




Catalog Number 10134
UPC Number 60198610134
Description Vinyl Insulated Fork Spade Terminal
 16-14 AWG



Features

- Color Coded insulation for easy identification
- Manufactured from high strength copper alloy
- Electro-tin plated for corrosion resistance
- Easy entry expanded insulation eliminates strand “Hang Up”, increases the crimping rates and the reliability of the termination
- Wire range stamped on the surface for easy interpretation
- Butted seams prevent splitting under maximum pressure
- Serrated barrel & flared insulation sleeve provides excellent contact & mechanical stress relief at insulation & barrel junction

General

Insulation Type Vinyl
 Material Copper Tubular/Copper Plate
 Finish Electro-Tin Plated
 Color Blue
 Wire Range 16-14
 Stud Size #8

Dimension Information

L Inches (mm) 0.886
 D Inches (mm) 0.177
 D1 Inches (mm) 0.091
 D2 Inches (mm) 0.169
 E Inches (mm) 0.453
 F Inches (mm) 0.256
 W Inches (mm) 0.311
 T Inches (mm) 0.031

Specifications

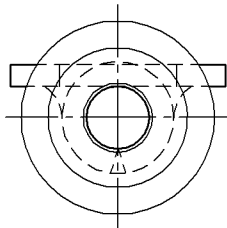
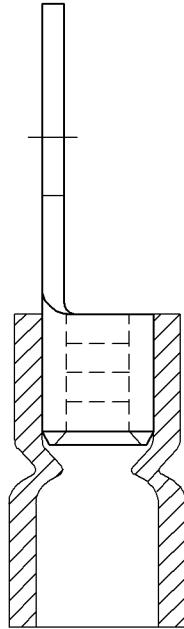
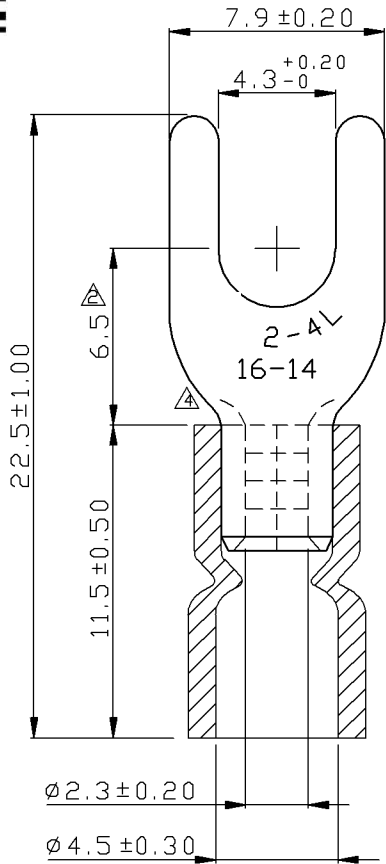
Temperature Rating 105°C
 Voltage Rating 600 V
 Flammability Rating UL94V-O
 Amp Rating 16 AWG 18 Amps
 14 AWG 30 Amps

Packaging

Bag Qty 100
 Master Bag Qty 1000

Certifications

UL Yes
 cUL Yes
 RoHS Yes



REV	DESCRIPTION	DATE
△	RDK-97127	2009/07/22
△	RDK-98020	2009/07/22
△	RDC-99213	2010/06/04

NOTE :

1. MAXIMUM ELECTRIC CURRENT : $\frac{\text{A.W.G. } 16 \mid 14}{\text{AMP. } 18 \mid 30}$
2. MAXIMUM ELECTRICAL RATING : 105°C 600 VOLTS MAX.
3. INSULATION MATERIAL : VINYL
4. INSULATION COLOR : BLUE
5. TERMINAL MATERIAL : COPPER
6. WIRE RANGE : 16-14 A.W.G. (1.5-2.5 mm²)
7. TERMINAL SURFACE TREATMENT : TIN PLATED
8. TERMINAL THICKNESS : 0.80 mm

Tolerance Unless Otherwise Specified	
0 >	mm ± ANGLE
>	mm ± 0° ° REF ±
>	mm ± ° ° ±
>	mm ± ° ° ±

NAME	VINYL-INSULATED (EASY ENTRY) SPADE TERMINALS			UNIT	mm	
PART NO.	10134	MATERIAL	-----	APPROVE		
NUMBER		SCALE	SHEET	PAGE	CHECKED	
DATE	2006/06/22	4/1	1-4	10F2	DRAWN	

Morris Products Inc.