



**Catalog Number** 10136  
**UPC Number** 60198610136  
**Description** Vinyl Insulated Fork Spade Terminal  
 16-14 AWG

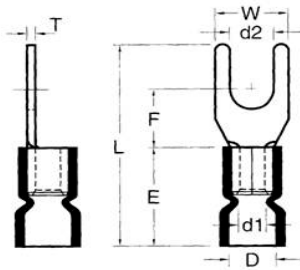


**Features**

- Color Coded insulation for easy identification
- Manufactured from high strength copper alloy
- Electro-tin plated for corrosion resistance
- Easy entry expanded insulation eliminates strand “Hang Up”, increases the crimping rates and the reliability of the termination
- Wire range stamped on the surface for easy interpretation
- Butted seams prevent splitting under maximum pressure
- Serrated barrel & flared insulation sleeve provides excellent contact & mechanical stress relief at insulation & barrel junction

**General**

Insulation Type Vinyl  
 Material Copper Tubular/Copper Plate  
 Finish Electro-Tin Plated  
 Color Blue  
 Wire Range 16-14  
 Stud Size #10



**Dimension Information**

L Inches (mm) 0.886  
 D Inches (mm) 0.177  
 D1 Inches (mm) 0.091  
 D2 Inches (mm) 0.209  
 E Inches (mm) 0.453  
 F Inches (mm) 0.256  
 W Inches (mm) 0.366  
 T Inches (mm) 0.031

**Specifications**

Temperature Rating 105°C  
 Voltage Rating 600 V  
 Flammability Rating UL94V-O  
 Amp Rating 16 AWG 18 Amps  
 14 AWG 30 Amps

**Packaging**

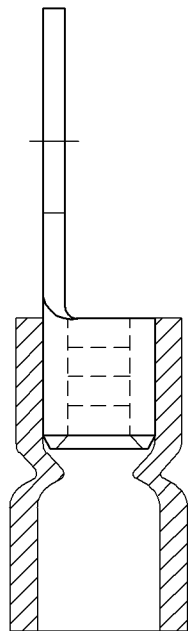
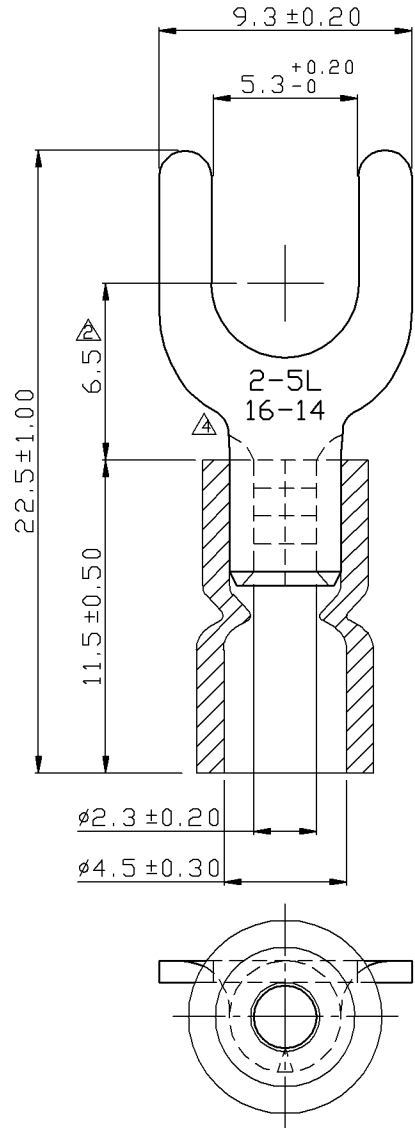
Bag Qty 100  
 Master Bag Qty 1000

**Certifications**

UL Yes  
 cUL Yes  
 RoHS Yes

Morris Products 53 Carey Road, Queensbury, NY 12804

[www.morrisproducts.com](http://www.morrisproducts.com)



REV	DESCRIPTION	DATE
△	RDK-97127	2009/07/22
△	RDK-98020	2009/07/22
△	RDC-99213	2010/06/04

NOTE :

1. MAXIMUM ELECTRIC CURRENT : 

A.W.G.	16	14	
AMP.	18	30	
2. MAXIMUM ELECTRICAL RATING : 105°C 600 VOLTS MAX.
3. INSULATION MATERIAL : VINYL
4. INSULATION COLOR : BLUE
5. TERMINAL MATERIAL : COPPER
6. WIRE RANGE : 16-14 A.W.G. ( 1.5-2.5 mm<sup>2</sup> )
7. TERMINAL SURFACE TREATMENT : TIN PLATED
8. TERMINAL THICKNESS : 0.80 mm

△ Tolerance Unless Otherwise Specified	
> mm ±	ANGLE
> mm ±	0° REF ±
> mm ±	° ±
> mm ±	° ±

NAME	VINYL-INSULATED (EASY ENTRY) SPADE TERMINALS			UNIT	mm	
PART NO.	10136	MATERIAL	-----	APPROVE		
NUMBER		SCALE	SHEET	PAGE	CHECKED	
DATE	2006/06/22	4/1	1-4	10F2	DRAWN	

Morris Products Inc.