



**Catalog Number** 10318  
**UPC Number** 60198610318  
**Description** Vinyl Insulated Female Disconnect Connectors  
16-14



#### Features

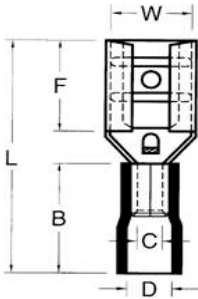
- Vinyl Color Coded insulation for easy identification
- Manufactured from high strength copper alloy
- Electro-tin plated for corrosion resistance
- Expanded insulation eliminates strand “Hang Up”, provides strain relief & excellent UV, temperature and chemical resistance
- Wire range stamped on the surface for easy interpretation
- Butted seams prevent splitting under maximum pressure
- Serrated barrel provides excellent pull-out force resistance & electrical contact

#### General

Insulation Type Vinyl  
Material Brass  
Finish Electro-Tin Plated  
Color Blue  
Wire Range 16-14  
Tab Size .032 X .110

#### Dimension Information

T Inches (mm) 0.012  
L Inches (mm) 0.732  
B Inches (mm) 0.394  
C Inches (mm) 0.067  
D Inches (mm) 0.177  
F Inches (mm) 0.256  
W Inches (mm) 0.126



#### Specifications

Temperature Rating 167°F (75°C)  
Voltage Rating 300 V  
Flammability Rating UL94V-O  
Amp Rating 14 AWG 30 Amps  
16 AWG 18 Amps

#### Packaging

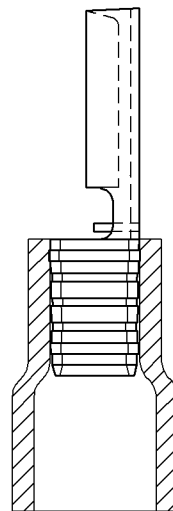
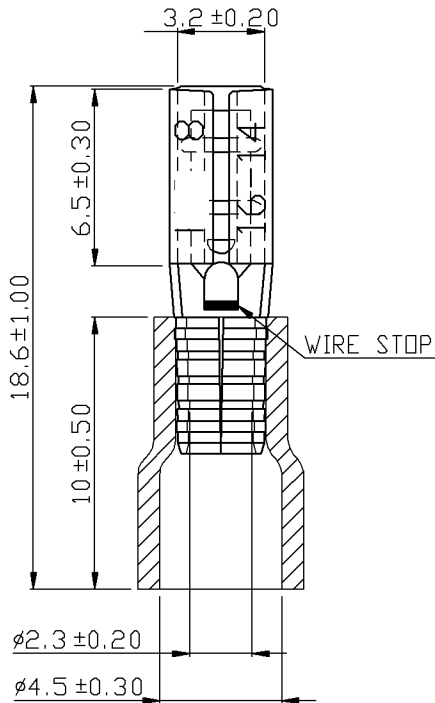
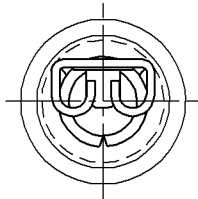
Bag Qty 100  
Master Bag Qty 1000

#### Certifications

UL Yes  
cUL Yes  
RoHS Yes

Morris Products 53 Carey Road, Queensbury, NY 12804

[www.morrisproducts.com](http://www.morrisproducts.com)



NOTE :

1. MAXIMUM ELECTRIC CURRENT : 

A.W.G.	16	14	
AMP.	10	15	
2. MAXIMUM ELECTRICAL RATING : 75°C 300 VOLTS MAX.
3. INSULATION MATERIAL : VINYL
4. INSULATION COLOR : BLUE
5. TERMINAL MATERIAL : BRASS
6. WIRE RANGE : 16-14 A.W.G. ( 1.5-2.5 mm<sup>2</sup> )
7. NEMA TAB : 0.032 inch \* 0.110 inch ( 0.8 mm \* 2.80 mm )
8. TERMINAL SURFACE TREATMENT : TIN PLATED
9. TERMINAL THICKNESS : 0.30 mm

Tolerance Unless Otherwise Specified	
0 > 6 mm ± 0.20	ANGLE
6 > 18 mm ± 0.30	0° > ° REF ±
18 > 30 mm ± 0.40	° ±
30 > 75 mm ± 0.50	° ±

NAME	VINYL-INSULATED FEMALE DISCONNECTORS			UNIT	mm	
PART NO.	10318	MATERIAL	-----	APPROVE		
NUMBER	.....	SCALE	SHEET	PAGE	CHECKED	
DATE	2006/04/26	4/1	1-0	10F2	DRAWN	

Morris Products Inc.