



**Catalog Number** 11022  
**UPC Number** 60198611022  
**Description** Non-Insulated Ring Terminals  
 22-16 AWG

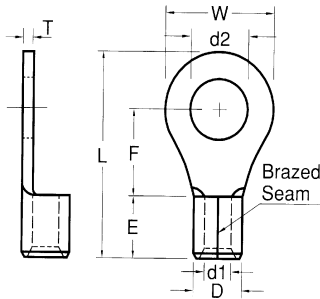


**Features**

- Non-Insulated
- Manufactured from high strength copper alloy
- Electro-tin plated for corrosion resistance
- Brazed seam prevents splitting under maximum pressure
- Wire range stamped on the surface for easy interpretation

**General**

**Insulation Type** None  
**Material** Copper  
**Finish** Electro-tin plated  
**Color** N/A  
**Wire Range** 22-16  
**Stud Size** 5/16



**Dimension Information**

**L Inches (mm)** 0.858  
**W Inches (mm)** 0.457  
**D Inches (mm)** 0.134  
**d1 Inches (mm)** 0.067  
**d2 Inches (mm)** 0.331  
**E Inches (mm)** 0.189  
**F Inches (mm)** 0.433  
**T Inches (mm)** 0.03

**Specifications**

**Temperature Rating** 150°C  
**Voltage Rating** 600 V  
**Flammability Rating** N/A  
**Amp Rating**

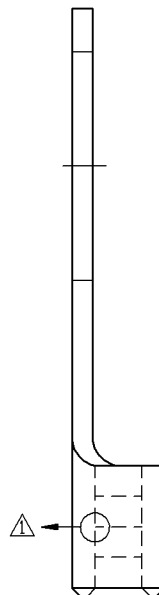
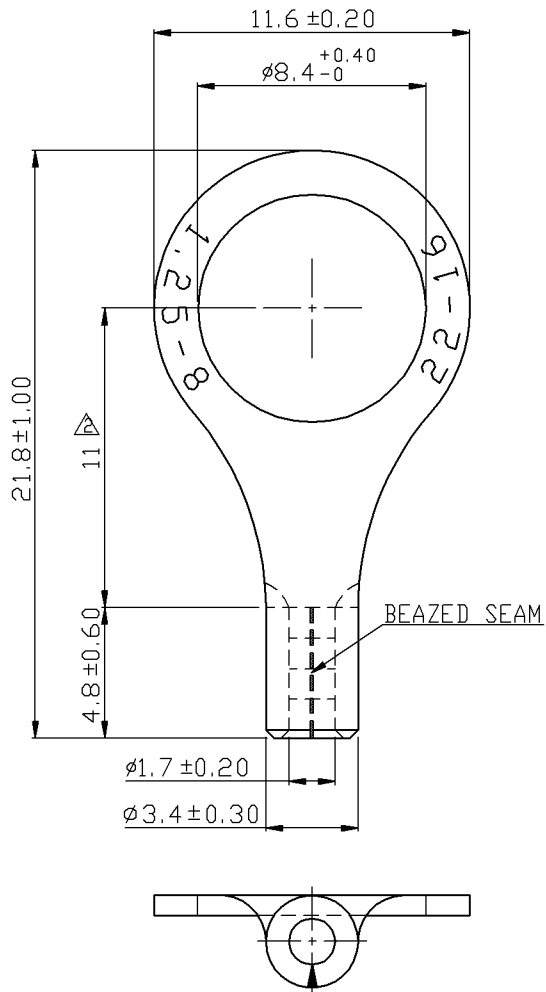
16 AWG	18 Amps
18 AWG	17 Amps
20 AWG	12 Amps
22 AWG	9 Amps

**Packaging**

**Bag Qty** 100  
**Master Bag Qty** 1000

**Certifications**

**UL** Yes  
**cUL** Yes  
**RoHS** Yes



REV	DESCRIPTION	DATE
△	RDK-96036	2007/08/09
△	RDK-97127	2008/10/17
△	RDK-98020	2009/09/30

NOTE:

- MAXIMUM ELECTRIC CURRENT : 

A.W.G.	22	20	18	16
AMP.	9	12	17	18
- WIRE RANGE : 22-16 A.W.G.(0.5-1.5mm<sup>2</sup>)
- SURFACE TREATMENT : TIN PLATED
- THICKNESS : 0.75 mm

Tolerance Unless Otherwise Specified	
0 >	mm ± ANGLE
>	mm ± 0° ° REF ±
>	mm ± ° ° ±
>	mm ± ° ° ±

NAME	NON-INSULATED RING TERMINALS			UNIT	mm	
PART NO.	11022	MATERIAL	COPPER	APPROVE		
NUMBER		SCALE	SHEET	PAGE	CHECKED	
DATE	2006/09/01	4/1	1-3	10F2	DRAWN	

Morris Products Inc.