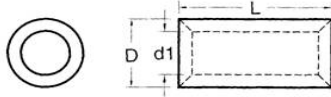




Catalog Number 12154
UPC Number 60198612154
Description Non-Insulated Parellel Splice Connector
16-14 AWG



PARALLEL

Features

- Manufactured from high strength tubular copper alloy
- Electro-tin plated for corrosion resistance
- Wire range stamped on the surface for easy interpretation
- Funneled barrel provides excellent contact & mechanical pull-out force resistance

General

Insulation Type N/A
Material Copper Tubular
Finish Electro-Tin Plated
Color N/A
Wire Range 16-14
Stud Size N/A

Dimension Information

L Inches (mm) 0.315
D Inches (mm) 0.154
D1 Inches (mm) 0.091
T Inches (mm) 0.031

Specifications

Temperature Rating 150°C
Voltage Rating 600 V
Flammability Rating N/A
Amp Rating 14 AWG 30 Amps
16 AWG 18 Amps

Packaging

Bag Qty 100
Master Bag Qty 1000

Certifications

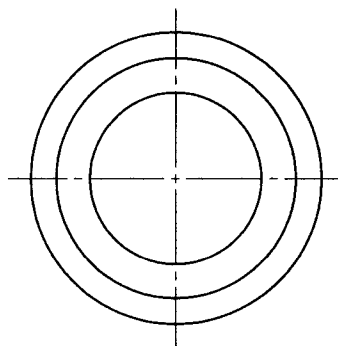
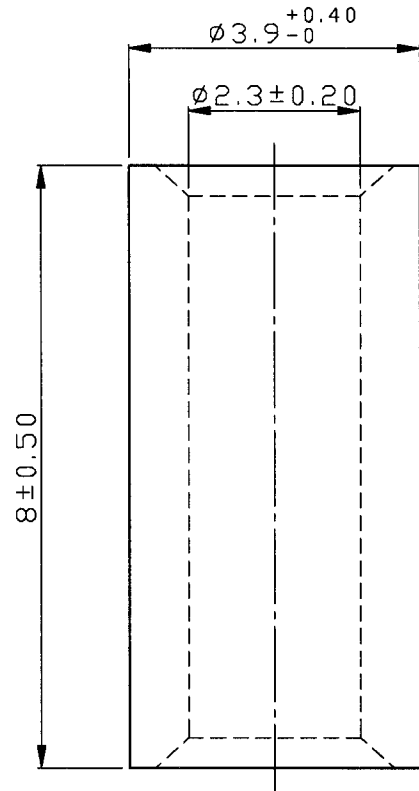
UL Yes
cUL Yes
RoHS Yes

Morris Products 53 Carey Road, Queensbury, NY 12804

www.morrisproducts.com



REV	DESCRIPTION	DATE
-----	-------------	------



NOTE :

- MAXIMUM ELECTRIC CURRENT :

A.W.G.	16	14	
AMP.	18	30	
- WIRE RANGE : 16-14 A.W.G. (1.5-2.5 mm²)
- SURFACE TREATMENT : TIN PLATED
- THICKNESS : 0.80 mm

Tolerance Unless Otherwise Specified	
0 > 6 mm ± 0.20	ANGLE
6 > 18 mm ± 0.30	0° > ° REF ±
18 > 30 mm ± 0.40	° > ° ±
30 > 75 mm ± 0.50	° > ° ±

NAME	NON-INSULATED PARALLEL CONNECTORS				UNIT	
PART NO.	12154	MATERIAL	COPPER TUBULAR	APPROVE		
NUMBER		SCALE	SHEET	PAGE	CHECKED	
DATE	2006/07/18	10/1	1-0	10F1	DRAWN	

Morris Products Inc.