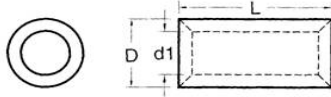




Catalog Number 12156
UPC Number 60198612156
Description Non-Insulated Parellel Splice Connector
12-10 AWG



PARALLEL

Features

- Manufactured from high strength tubular copper alloy
- Electro-tin plated for corrosion resistance
- Wire range stamped on the surface for easy interpretation
- Funneled barrel provides excellent contact & mechanical pull-out force resistance

General

Insulation Type N/A
Material Copper Tubular
Finish Electro-Tin Plated
Color N/A
Wire Range 12-10
Stud Size N/A

Dimension Information

L Inches (mm) 0.335
D Inches (mm) 0.213
D1 Inches (mm) 0.134
T Inches (mm) 0.039

Specifications

Temperature Rating 150°C
Voltage Rating 600 V
Flammability Rating N/A
Amp Rating 12 AWG 35 Amps
10 AWG 50 Amps

Packaging

Bag Qty 100
Master Bag Qty 1000

Certifications

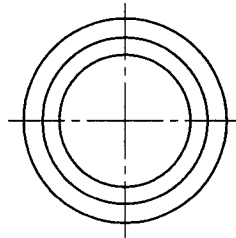
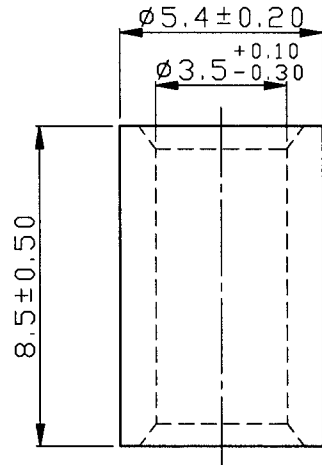
UL Yes
cUL Yes
RoHS Yes

Morris Products 53 Carey Road, Queensbury, NY 12804

www.morrisproducts.com



REV	DESCRIPTION	DATE
-----	-------------	------



NOTE :

- MAXIMUM ELECTRIC CURRENT :

A.W.G.	12	10	
AMP.	35	50	
- WIRE RANGE : 12-10 A.W.G. (4 - 6 mm²)
- SURFACE TREATMENT : TIN PLATED
- THICKNESS : 1.00 mm

Tolerance Unless Otherwise Specified	
0 > 6 mm ± 0.20	ANGLE
6 > 18 mm ± 0.30	0° REF ±
18 > 30 mm ± 0.40	° ±
30 > 75 mm ± 0.50	° ±

NAME	NON-INSULATED PARALLEL CONNECTORS				UNIT	
PART NO.	12156	MATERIAL	COPPER TUBULAR	APPROVE		
NUMBER		SCALE	SHEET PAGE	CHECKED		
DATE	2006/07/18	5/1	1-0 1DF1	DRAWN		

Morris Products Inc.