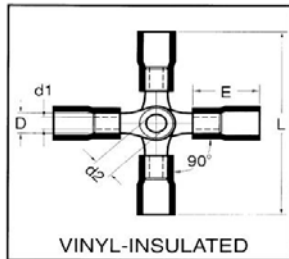




Catalog Number 12180
UPC Number 60198612180
Description Vinyl Insulated 4-Way Splice Connector
 16-14 AWG



Features

- Color Coded insulation for easy identification
- Manufactured from high strength copper alloy
- Electro-tin plated for corrosion resistance
- Easy entry expanded insulation eliminates strand “Hang Up”, increases the crimping rates and the reliability of the termination
- Wire range stamped on the surface for easy interpretation
- Funneled barrel & flared insulation sleeve provides excellent contact & mechanical stress relief at insulation & barrel junction

General

Insulation Type Vinyl
 Material Copper
 Finish Electro-Tin Plated
 Color Blue
 Wire Range 16-14
 Stud Size 8

Dimension Information

L Inches (mm) 1.398
 D Inches (mm) 0.177
 D1 Inches (mm) 0.091
 D2 Inches (mm) 0.157
 E Inches (mm) 0.394

Specifications

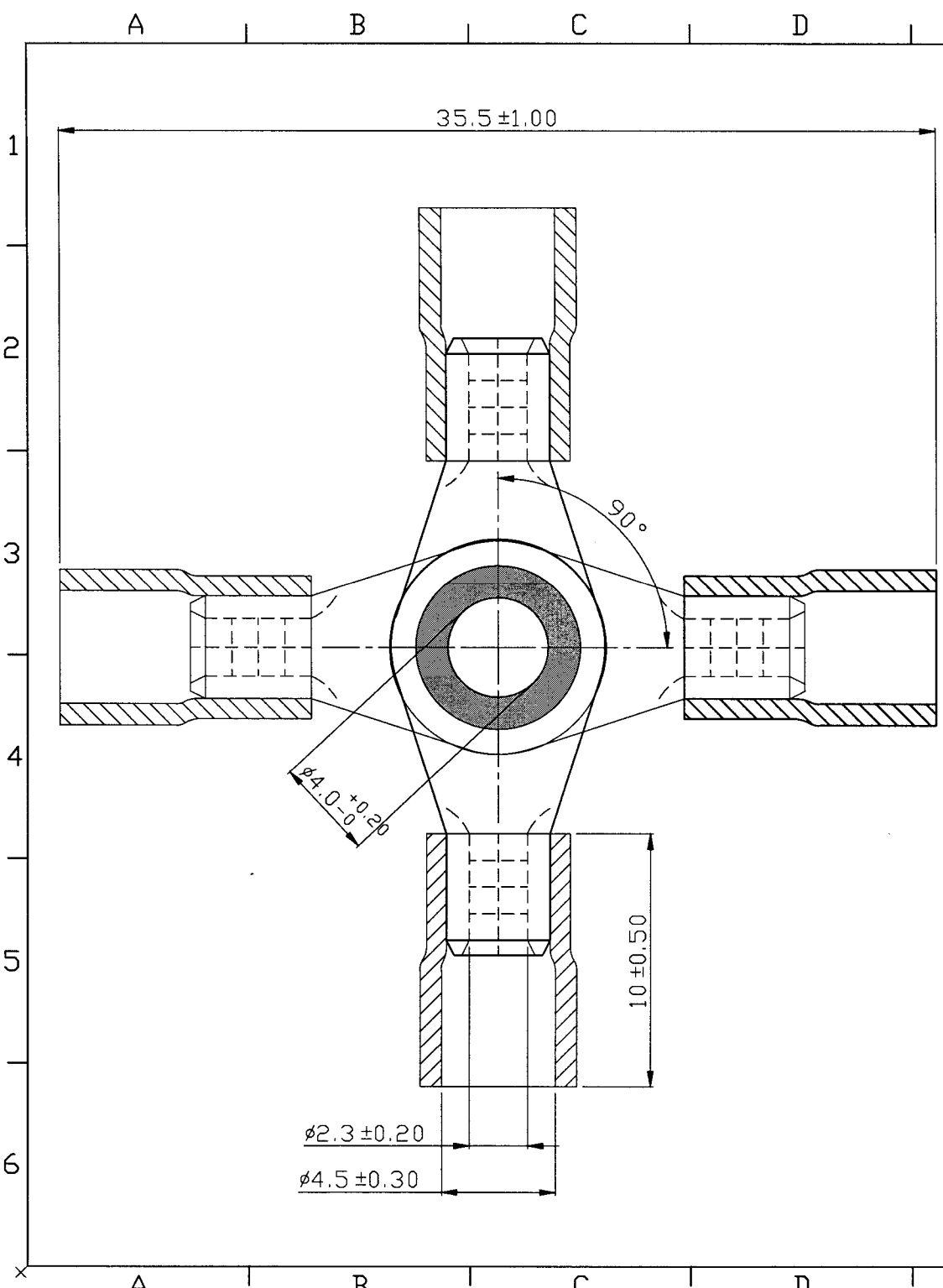
Temperature Rating 75°C
 Voltage Rating 600 V
 Flammability Rating UL94V-O
 Amp Rating 14 AWG 30 Amps
 16 AWG 18 Amps

Packaging

Bag Qty 100
 Master Bag Qty 1000

Certifications

UL Yes
 cUL Yes
 RoHS Yes



REV	DESCRIPTION	DATE
-----	-------------	------



- NOTE :
1. MAXIMUM ELECTRIC CURRENT :

A.W.G.	16	14	
AMP.	18	30	
 2. MAXIMUM ELECTRICAL RATING : 75°C 600 VOLTS MAX.
 3. INSULATION MATERIAL : VINYL
 4. INSULATION COLOR : BLUE
 5. TERMINAL MATERIAL : COPPER
 6. WIRE RANGE : 16-14 A.W.G. (1.5-2.5 mm²)
 7. TERMINAL SURFACE TREATMENT : TIN PLATED
 8. TERMINAL THICKNESS : 0.80 mm

Tolerance Unless Otherwise Specified	
0 > 6 mm ± 0.20	ANGLE
6 > 18 mm ± 0.30	0° ° REF ±
18 > 30 mm ± 0.40	° ±
30 > 75 mm ± 0.50	° ±

NAME	VINYL-INSULATED 4-WAY CONNECTORS			UNIT	mm	
PART NO.	12180	MATERIAL	-----	APPROVE		
NUMBER	KA-95225-C	SCALE	SHEET	PAGE	CHECKED	
DATE	2006/04/14	4/1	1-0	10F1	DRAWN	

Morris Products Inc