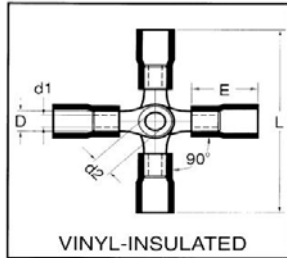




Catalog Number 12182
UPC Number 60198612182
Description Vinyl Insulated 4-Way Splice Connector
 12-10 AWG



Features

- Color Coded insulation for easy identification
- Manufactured from high strength copper alloy
- Electro-tin plated for corrosion resistance
- Easy entry expanded insulation eliminates strand “Hang Up”, increases the crimping rates and the reliability of the termination
- Wire range stamped on the surface for easy interpretation
- Funneled barrel & flared insulation sleeve provides excellent contact & mechanical stress relief at insulation & barrel junction

General

Insulation Type Vinyl
 Material Copper
 Finish Electro-Tin Plated
 Color Yellow
 Wire Range 12-10
 Stud Size 8

Dimension Information

L Inches (mm) 1.713
 D Inches (mm) 0.248
 D1 Inches (mm) 0.134
 D2 Inches (mm) 0.157
 E Inches (mm) 0.512

Specifications

Temperature Rating 75°C
 Voltage Rating 600 V
 Flammability Rating UL94V-O
 Amp Rating 12 AWG 35 Amps
 10 AWG 50 Amps

Packaging

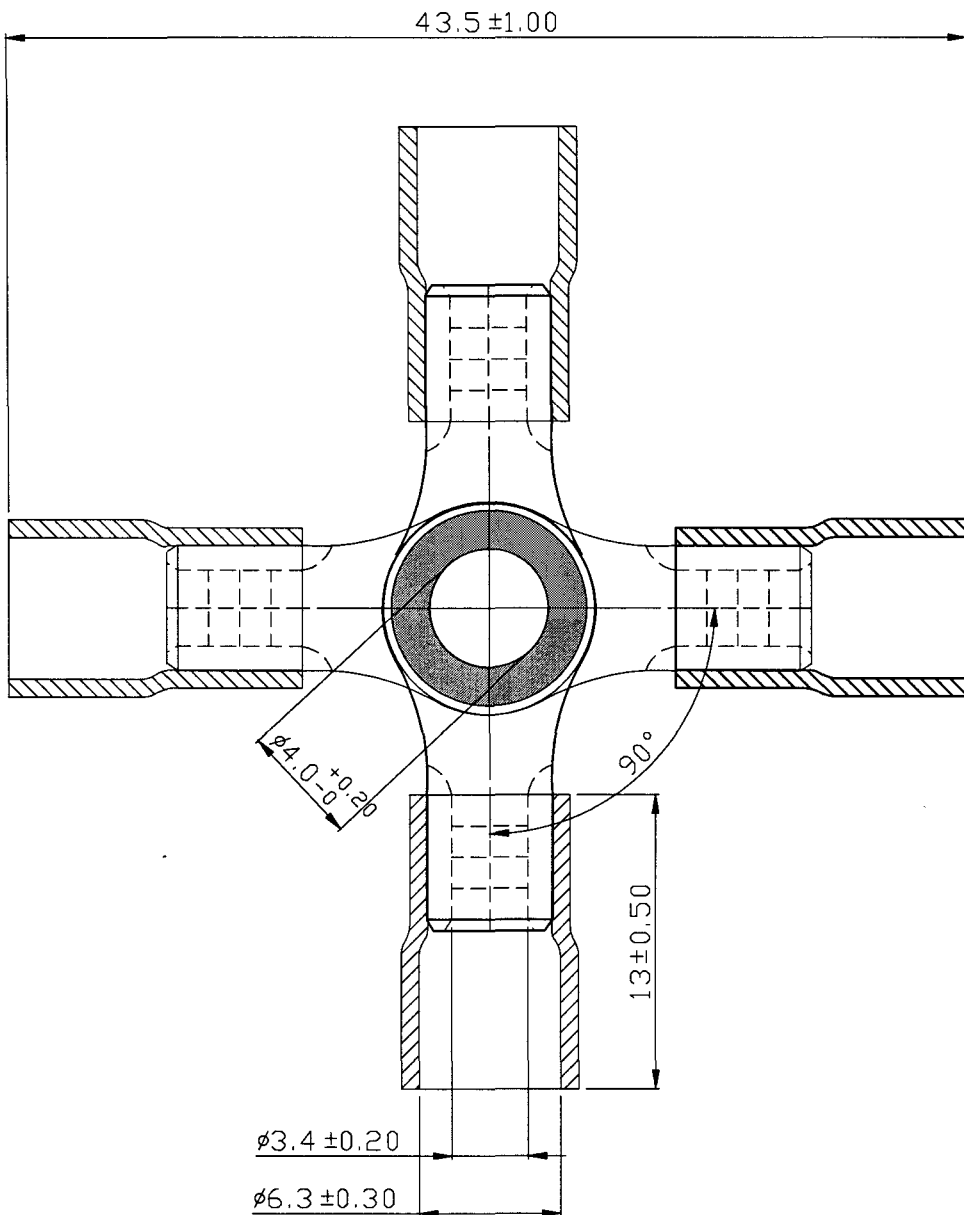
Bag Qty 100
 Master Bag Qty 1000

Certifications

UL Yes
 cUL Yes
 RoHS Yes

A B C D E F G H

REV DESCRIPTION DATE



NOTE :

1. MAXIMUM ELECTRIC CURRENT :

A.W.G.	12	10	
AMP.	35	50	
2. MAXIMUM ELECTRICAL RATING : 75°C 600 VOLTS MAX.
3. INSULATION MATERIAL : VINYL
4. INSULATION COLOR : YELLOW
5. TERMINAL MATERIAL : COPPER
6. WIRE RANGE : 12-10 A.W.G. (4-6 mm²)
7. TERMINAL SURFACE TREATMENT : TIN PLATED
8. TERMINAL THICKNESS : 1.00 mm

Tolerance Unless Otherwise Specified	
0 > 6 mm ± 0.20	ANGLE
6 > 18 mm ± 0.30	0° ° REF ±
18 > 30 mm ± 0.40	° ° ±
30 > 75 mm ± 0.50	° ° ±

NAME	VINYL-INSULATED 4-WAY CONNECTORS			UNIT	mm		
PART NO.	12182	MATERIAL	-----	APPROVE			
NUMBER	K	26-C	SCALE	SHEET	PAGE	CHECKER	
DATE	2006/04/14	3/1	1-0	10F1	DRAWN		

Morris Products Inc.

A B C D E F G H