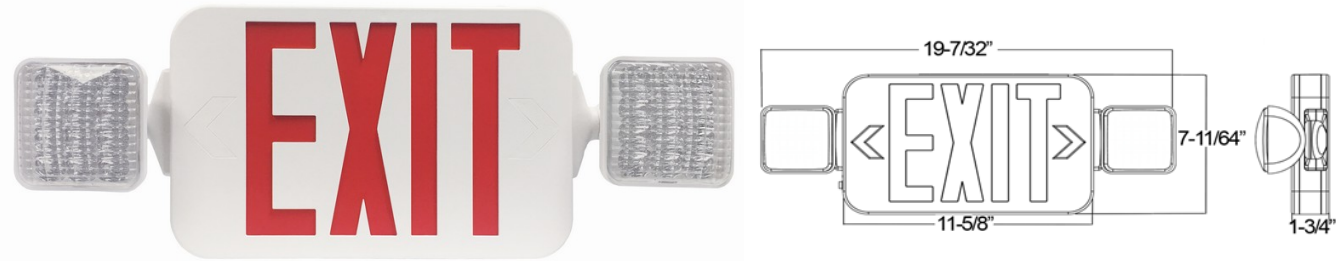




73432 - SQUARE HEAD COMBO

EXIT EMERGENCY LIGHT

HIGH OUTPUT - RED LETTERS, RED LEDs,
WHITE HOUSING



FEATURES:

- Combination LED Energy Saving Exit Sign and LED Emergency Lighting Unit In One Compact Design
- Long Life Energy Saving LED Lamps
- Completely Self-Contained
- Fully Automatic Operation
- Push to Test Switch
- Automatic Low Voltage Disconnect (LVD)
- 120 or 277 VAC Operation
- Charge Rate/Power On LED Indicator Light
- Energy Consumption of Less than 4 Watts for Red letters and Less than 2 Watts for Green Letters
- Injection-Molded, UL 94 V-O Flame Retardant, High Impact, Thermoplastic Housing
- Fully Adjustable Glare-Free LED Lamps
- Heads Rotate 180°+ for Maximum Field Flexibility
- Universal Mounting Canopy for Top or Back J-box Installation & 2 Snap-fit Face Plates
- Field replaceable chevron directional indicators
- Integral wiring channels to facilitate installation
- 3.6 Volt 1000/1800 mAH Sealed Ni-Cad Rechargeable Maintenance-Free Battery
- 90 Minute Minimum Battery run Time
- Input Current: .22A 120V .10A 277V
- Input Wattage: 1.8W Standard; 2.5W Remote Capable
- Environmentally-Coated, Solid State Charger
- Damp Location Rated
- UL 924 Listed, 5 Year Warranty

CAT NO.	TYPE	VOLTAGE	LED COLOR	CCT	HOUSING	BATTERY	LUMENS PER HEAD
73432	High Output	120/277	Red	5000K	White	Ni-Cad	76

Specifications

Input Rating Amps: .22A@120V .10A@277V
Input Rating Watts: 1.8W
Frequency: 60 Hz
Voltage Rating: 120/277
Flammability Rating: UL94V-0

Packaging

Box Qty 1
Master Carton Qty 6

Certifications

UL UL 924
cUL Yes
RoHS Yes