

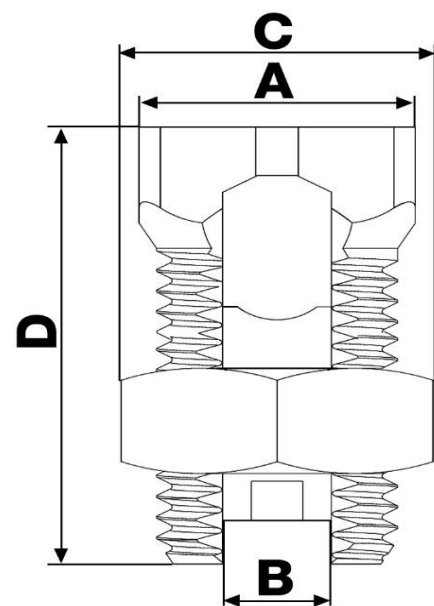


Catalog Number See Table
UPC Number
Description Copper Split Bolt - HexHead
#8 Thru 750 MCM
UL467 DB Listed



- Features**
- Manufactured from High Strength High Conductivity Electolytic Copper Alloy to Ensure Both Maximum Strength and Conductivity
 - Rated for Copper Conductors Only
 - Connectors are Re-Usable
 - Rated 600V: 194°F (90°C)
 - UL486 UL 486A-486B & CSA C22.2 No. 65-13
 - UL 467 Listed for Direct Burial and Grounding/Bonding

General
Conductor Size: #8 to 750 MCM
Material: Body: High Strength Elecrolytic Copper
Nut and Spacer: Copper Alloy



Dimension Information
Stock Thickness: See Table

Specifications
Temperature Rating: 90°C
Voltage Rating: 600
Flammability Rating: N/A
Amp Rating: To Conductor

Packaging
Box Qty: See Table

Certifications
UL UL 467 Listed For Direct Burial
CSA Yes
RoHS N/A

DIMENSIONS - INCHES											
CAT. NO.	AWG	MAX RUN TO MAX TAP	MIN RUN TO MIN. TAP	MAX RUN TO MIN TAP	MIN EQUAL TAP & RUN	TORQUE IN LB	A	B	C	D	BOX QTY
90901	8	8-8	16-16	8-16	16-16	80	.472	.145	.582	.854	100
90902	6	6-6	10-16	6-16	10-10	165	.492	.165	.625	.906	100
90903	4	4-4	8-16	4-16	8-8	165	.709	.288	.812	1.16	50
90904	3	2-2	4-8	2-8	4-4	275	.600	.280	.750	1.50	50
90905	2	2-2	6-14	2-14	6-6	275	.748	.328	.812	1.26	50
90906	1/0	1/0-1/0	4-14	1/0-14	4-4	385	.787	.304	.937	1.54	50
90907	2/0	2/0-2/0	2-14	2/0-14	2-2	385	.868	.421	1.06	1.69	25
90908	3/0	3/0-3/0	2-8	3/0-8	2-2	500	1.10	.531	1.25	2.09	25
90909	4/0-250	250-250	1/0-8	250-8	1/0-1/0	850	1.10	.579	1.25	2.09	25
90910	350	350-350	4/0-1/0	350-1/0	4/0-4/0	850	1.22	.700	1.50	2.38	12
90911	500	500-500	250-2/0	500-2/0	250-250	925	1.34	.815	1.75	2.94	12
90912	750	750-750	350-4/0	750-4/0	350-350	1000	1.94	1.02	2.31	3.51	1
90913	1000	1000-1000	500-4/0	1000-4/0	500-500	1100	2.19	1.17	2.58	3.90	1